



盘式振动研磨仪RS 300

Analytical fineness for large sample volumes

在制备用于光谱分析的样品时，振动圆盘磨的速度是任何磨床都无法比拟的。**RETSCH** 的振动圆盘磨 **RS 300** 适用于对中等硬度、脆性和纤维状材料进行快速、无损耗和可重复的研磨。

由于采用了坚固的万向传动轴，可使研磨罐做三维运动，RS 300 可承受的研磨组重量高达 30 公斤，连同粉碎样品最大可承重 55kg。

研磨套件有多种尺寸和材料可供选择，可轻松满足应用要求。



[点击观看视频](#)

产品视频

可重复 & 安全

- | 由于采用了万向传动轴
(磨削装置的 3D 振动)，因此可获得可重复的结果和均匀的样品
- | 自动回转功能 (左/右旋转)
- | 可编程间隔功能 (自动启动/停止) 增长研磨功能
- | 研磨罐容量从 100 毫升到 2,000 毫升不等
- | 气动磨罐夹具 (带气压)，操作方便安全
- | 附加安全功能：只有当气动压力正确时，磨机才会启动
- | 可选配自动升降器，以符合人体工程学的方式提升重型磨具



盘式振动研磨仪RS 300

符合人体工程学的操作方式，操作简便

RS 300 及其磨削组件的操作和搬运非常方便且符合人体工程学。自动升降器是一种可选配件，可大大方便大容量磨床的升降，符合人体工程学原理。整机多模块化设计，每个模块出现故障都可实时提示，方便判断故障原因。

气动夹紧装置可方便安全地固定研磨套件。只有当空压机气压正确时，研磨机才会启动，而当研磨过程停止时，装置会自动解除。可编程间隔功能有助于提高研磨效果，而自动反转功能则可减少研磨罐内的结块效应。



由于研磨组件的尺寸和材料多种多样，RS 300 适用于广泛的应用领域。研磨机的批量从 35 毫升到 2000 毫升不等，进料尺寸最大可达 20 毫米。

振动盘磨机的研磨组件包括一个带盖研磨罐和一个研磨盘。400 ml 研磨组件还包括一个研磨环，300 ml 研磨组件则有两个额外的研磨环：

- | 安全、防滑的固定装置，盖子和底座上有防扭锁功能，配套拉紧固定栓底座
- | 研磨罐体和盖子边缘之间的间隙便于打开
- | 采用 O 型圈实现最佳密封（湿研磨的理想选择）
- | 清晰的研磨组件标识（产品编号、材料和体积）
- | 800 毫升、1000 毫升和 2000 毫升研磨套装的圆盘有一个开口，可完美混合大量样品 多种间隔环，适合不同体积罐体

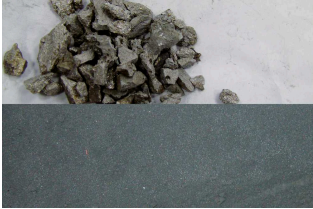


盘式振动研磨仪RS 300

典型样品材料

RETSCH的振动盘磨仪可以快速粉碎材料，如水泥、熟料、陶瓷、煤、焦炭、混凝土、刚玉、玻璃、金属氧化物、矿物、矿

石、硅酸盐、矿渣、土壤等等。



炉渣



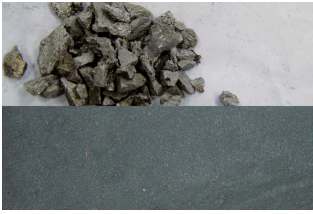
电子产品废料



铪



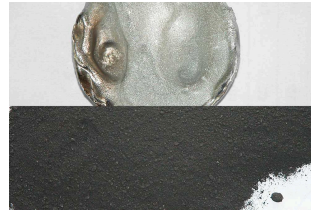
白云石



炉渣



电子产品废料



铊



白云石

为了找到最好的解决方案，请访问我们的应用数据库。

盘式振动研磨仪RS 300

作用原理

振动盘磨仪结合了压力、撞击力、摩擦力和冲击力。研磨仪配有气动快速夹紧装置振动盘，保证了三维振动的安全可靠。

样品被研磨环的离心力产生的摩擦、撞击、粉碎力破碎，机器的动力由2.2千瓦的3相电动机产生。

盘式振动研磨仪RS 300

技术参数

应用	粉碎、混和与研磨制样
应用领域	地质 / 冶金, 建筑原料, 环境 / 资源回收利用, 玻璃 / 陶瓷
样品特征	中硬性, 硬的, 脆性的, 含纤维的
粉碎原理:	压力、摩擦力
最大进样尺寸	< 20 mm
最终出料粒度 *	< 20 µm
批次加料量*	35 - 2,000 ml
网频50赫兹 (60赫兹) 下的转速	912 min ⁻¹
研磨套件材料:	铬钢 (淬火钢), 碳化钨, 钢1.1740 (防重金属污染)
研磨罐尺寸	50 ml / 100 ml / 300 ml / 400 ml / 800 ml / 1,000 ml / 2,000 ml
粉碎时间设定	digital, 00:00 to 59:59
驱动	三相电机
驱动功率	2.2 kW
电源数据:	不同电压
电源接头:	三相
防护类型	IP 40
机体尺寸 (宽x高x纵深)	1150 x 1400 x 810 mm
净重	~ 415 kg (不含研磨架)
标准	CE

受样品材料性质和仪器配置/设定的影响

www.retsch.cn/rs300

ORDER DATA

VIBRATORY DISC MILL RS 300

**Vibratory Disc Mill RS 300 for grinding sets 100 ml - 2000 ml
(please order grinding sets separately)**

21.101.0001		RS 300	3/N~ 400 V, 50 Hz, without AutoLifter
-------------	---	--------	--

21.101.0005		RS 300	3/N~ 220 V, 60 Hz, without AutoLifter
-------------	---	--------	--

其余可选的电源配置机型价格相同

ACCESSORIES / SPARE PARTS RS 300

23.225.0003	AutoLifter for ergonomical outlifting of grinding sets 800, 1000 and 2000 ml
-------------	--

03.143.0071	Platform Insert
-------------	-----------------

03.225.0093	Disc hook
-------------	-----------

23.701.0007	Air compressor 200/240 V, 50 Hz
-------------	---------------------------------

03.381.0010	Airbag clamp
-------------	--------------

23.181.0001	Spring (set of 6 pieces)
-------------	--------------------------

23.043.0001	Spring spigot bush (set of 12 pieces)
-------------	---------------------------------------

2000 ML GRINDING SETS

**Complete set, incl. grinding jar, lid with gasket and disc
(no spacer ring needed)**

23.462.0002	Grinding set complete, chrome steel
-------------	-------------------------------------

23.462.0020	Grinding set complete, standard steel
-------------	---------------------------------------

23.462.0003	Grinding set complete, stainless steel 1.4401 polished
-------------	--

ACCESSORIES / SPARE PARTS

03.462.0378	Grinding jar, chrome steel
-------------	----------------------------

03.470.0041	Disc, chrome steel
-------------	--------------------

03.107.0589	顶盖, chrome steel
-------------	------------------

03.107.0592	Aeration lid, chrome steel
03.462.0376	Grinding jar, standard steel
03.470.0042	Disc, standard steel
03.107.0588	顶盖, standard steel
03.111.0364	Gasket for lid

1000 ML GRINDING SETS

**Complete set, incl. grinding jar, lid with gasket and disc
(please order spacer ring separately)**

23.462.0016	Grinding set complete, chrome steel
23.462.0014	Grinding set complete, standard steel

ACCESSORIES / SPARE PARTS

23.025.0109	Spacer ring for chrome steel, standard steel and silicon nitride grinding set
03.462.0377	Grinding jar, chrome steel
03.470.0039	Disc, chrome steel
03.107.0587	顶盖, chrome steel
03.462.0372	Grinding jar, standard steel
03.470.0040	Disc, standard steel
03.107.0586	顶盖, standard steel
03.111.0363	Gasket for lid

800 ML GRINDING SETS

**Complete set, incl. grinding jar, lid with gasket and disc
(please order spacer ring separately)**

23.462.0024	Grinding set complete, chrome steel
23.462.0018	Grinding set complete, standard steel

ACCESSORIES / SPARE PARTS

23.025.0109	Spacer ring for chrome steel and standard steel grinding set
03.462.0379	Grinding jar, chrome steel

03.470.0037	Disc, chrome steel
03.107.0585	顶盖, chrome steel
03.462.0371	Grinding jar, standard steel
03.470.0038	Disc, standard steel
03.107.0584	顶盖, standard steel
03.111.0360	Gasket for lid

400 ML GRINDING SETS

**Complete set, incl. grinding jar, lid with gasket and disc
(please order spacer ring separately)**

23.462.0029	Grinding set complete, chrome steel
23.462.0030	Grinding set complete, Standardstahl

ACCESSORIES / SPARE PARTS

23.025.0108	Spacer ring for chrome steel and standard steel grinding set
03.462.0369	Grinding jar, chrome steel
03.470.0035	Disc, chrome steel
03.604.0255	磨环, chrome steel
03.107.0583	顶盖, chrome steel
03.462.0370	Grinding jar, standard steel
03.470.0036	Disc, standard steel
03.604.0256	磨环, standard steel
03.107.0582	顶盖, standard steel
03.111.0362	Gasket for lid

100 ML GRINDING SETS

**Complete set, incl. grinding jar, lid with gasket and disc
(please order spacer ring separately)**

23.462.0008	Grinding set complete, chrome steel
23.462.0017	Grinding set complete, standard steel
23.462.0006	Grinding set complete, 碳化钨, light

23.462.0007 Grinding set complete, 碳化钨, with protective steel jacket

ACCESSORIES / SPARE PARTS

23.025.0104 Spacer ring for chrome steel and standard steel grinding set

23.025.0105 Spacer ring for tungsten carbide grinding set

23.025.0106 Spacer ring for tungsten carbide light grinding set

23.025.0117 Adapter plate for 4 x 100 ml chrome steel, standard steel and tungsten carbide light grinding sets

05.114.0070 O-ring for lid



50 ML GRINDING SETS

Complete set, incl. grinding jar, lid with gasket and disc

23.462.0055 Grinding set complete, chrome steel for adapter plate

ACCESSORIES / SPARE PARTS

23.025.0118 Adapter plate for 4 x 50 ml chrome steel grinding sets

05.114.0122 O-ring for lid

